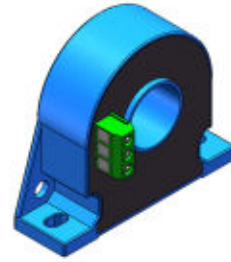


Hall effect Current Sensor

SCB39 Series



Product description

Features

- Based on Hall effect measurement principle, close loop circuit mode.
- The isolation voltage between primary and secondary is greater than 3000VAC.
- Comply with UL94-V0 flame retardant rating.

Performance

- It can measure DC, AC, pulse, and various irregular waveform currents of cable conductors under isolation conditions.
- Very low temperature drift, zero drift, fast response time, good linearity, accuracy can reach 0.1%.
- Dynamic performance (di/dt and response time) is optimal when the busbar is fully filled with primary perforations.
- Strong ability to resist external electromagnetic interference (BCI, EFT, CS, CE, ESD, dv/dt, etc.).

Application

- It can be widely used in inverters, UPS, photovoltaic inverters, electric vehicle drives, high-frequency power supplies, inverter welding machines and other products.

Implementation standards

- GB/T 7665-2005
- JB/T 7490-2007
- JB/T 25480-2010
- JB/T 9473-2020
- SJ 20792-2000

Certification



Shenzhen SoCan Technologies Co.,Ltd

SoCan is committed to continuously improving product quality, and the company reserves the right to update its products.

www.szsocan.com

Technical Parameters

Model Parameters (25°C)	SCB39-	
	200A	300A
Primary Current (A) I_{PN}	200A	300A
Primary Current Max. Peak Value (A) I_{PM}	±300A	±500A
Turns ratio K_N	1:2000	1:2000
Output signal I_{SN} @ I_{PN} ,	±100mA	±150mA
Measure resistance R_M @ I_{PN} , V_c =±15V,	40Ω	26.7Ω

Electrical Data

Item	Min.	Max.	Typical	Unit
Input power supply voltage range V_c (±5%) (Remark 1, Remark 2)	±12	±15	±18	V _{DC}
Current consumption I_c I_c @±15V	13mA+Output Current I_s			mA
Accuracy X @ I_{PN} , T_A = 25°C	-	±0.5	-	%
Linearity ε_L @ R_L =10KΩ, T_A = 25°C	-	±0.1	-	%
Offset current I_{OE} @ T_A = 25°C, I_p =0	-	±0.2	-	mA
Magnetic offset current I_{OM} @ $I_p \rightarrow 0$	-	±0.2	-	mA
Temperature coefficient of offset current TCI_{OE}	-	±0.2	±-0.6	mA
Response time t_D @ $0 \rightarrow I_{PN}$	-	1	-	us
Band width BW	-	50	100K	Hz
Ambient operating temperature T_A	-40	25	85	°C
Ambient storage temperature T_s	-40	25	90	°C
Withstand voltage V_D @50Hz,60s,0.1mA	-	3000	-	V _{AC}
Weight m	-	105	-	g

Remarks:

1. VC is greater than the maximum value, which may cause permanent failure of the measurement device.

Shenzhen SoCan Technologies Co.,Ltd

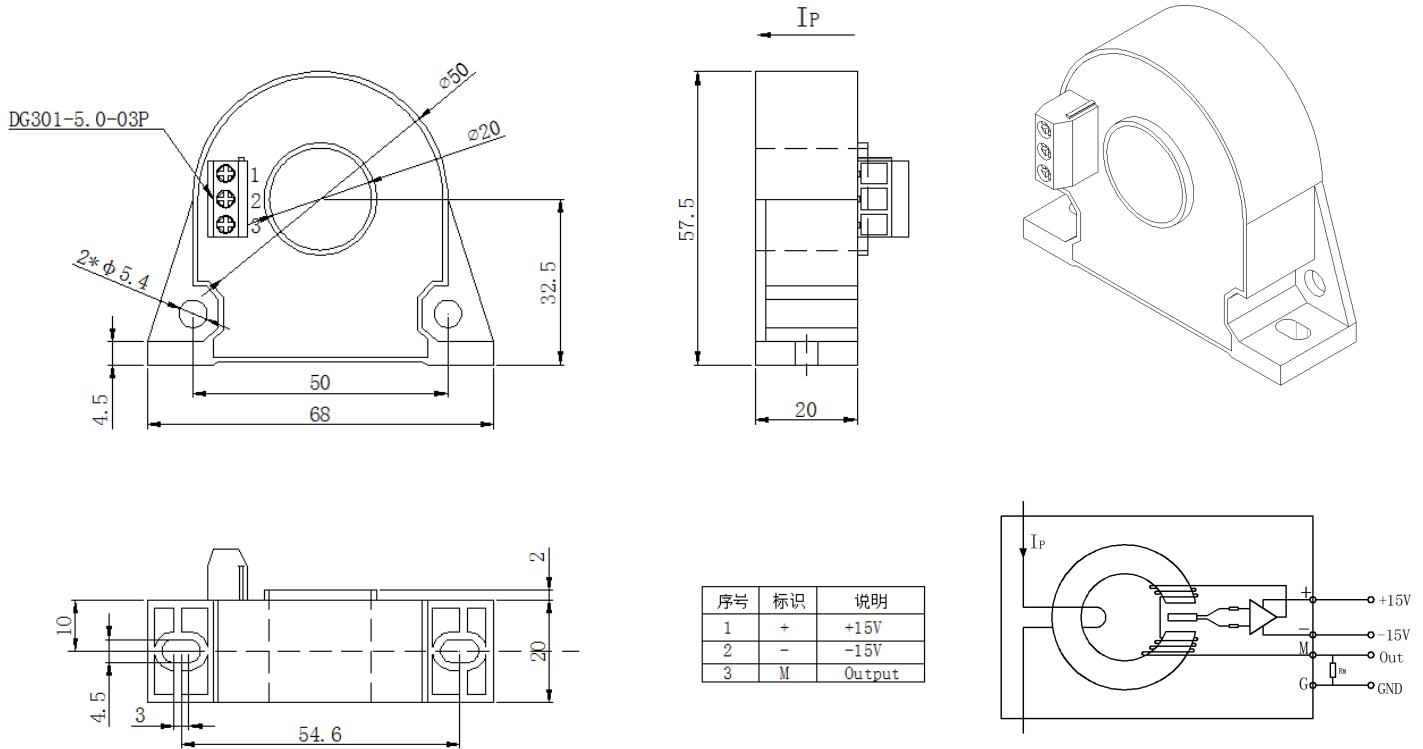
SoCan is committed to continuously improving product quality, and the company reserves the right to update its products.

www.szsocan.com

$$2. I_{OUT} = I_{SN} * \frac{I_P}{I_{PN}} + I_{OE}$$

3. Follow speed $di/dt > 100A/uS$

Dimensions (in mm)



Notes:

1. Size error: $\pm 0.5mm$;
2. Primary aperture: $\phi 20mm$;
3. Fastening hole: $\phi 4.5mm \times 2$;
4. SCB39 output terminal: DG301-5.0-03P;
- 5 The IP indication direction is the positive direction of the current;
- 6 Incorrect wiring may cause damage to the sensor.

Shenzhen SoCan Technologies Co.,Ltd

SoCan is committed to continuously improving product quality, and the company reserves the right to update its products.

www.szsocan.com